

INSTRUCTION MANUAL *CABLOFIL - AutoCAD Tools*

A Quick Three Step Installation

Step 1

Double Click on the *Cablofil ACAD Tools.exe* file and extract the files into the default *C:\Cablofil* folder. The following program files should self-extract:

<i>Cablofil.bmp</i>	<i>Cablofil.mnr</i>
<i>Cablofil.dwg</i>	<i>Cablofil.mns</i>
<i>Cablofil.lin</i>	<i>Cablofil.shx</i>
<i>Cablofil.mnc</i>	<i>Cablofil.vlx</i>
<i>Cablofil.mnl</i>	<i>Cablofil.pdf</i>

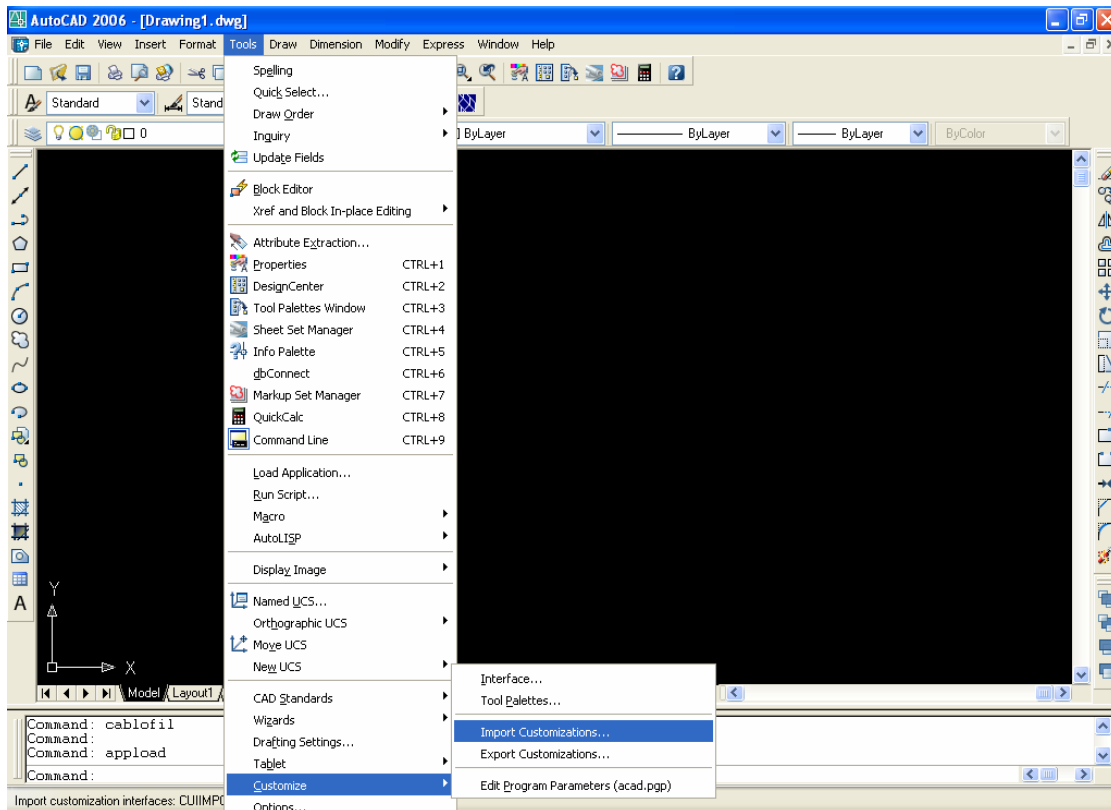
Step 2

Move all of the files into the AutoCAD support folder. This should be the *C:\Program Files\AutoCAD 2006\Support* folder.

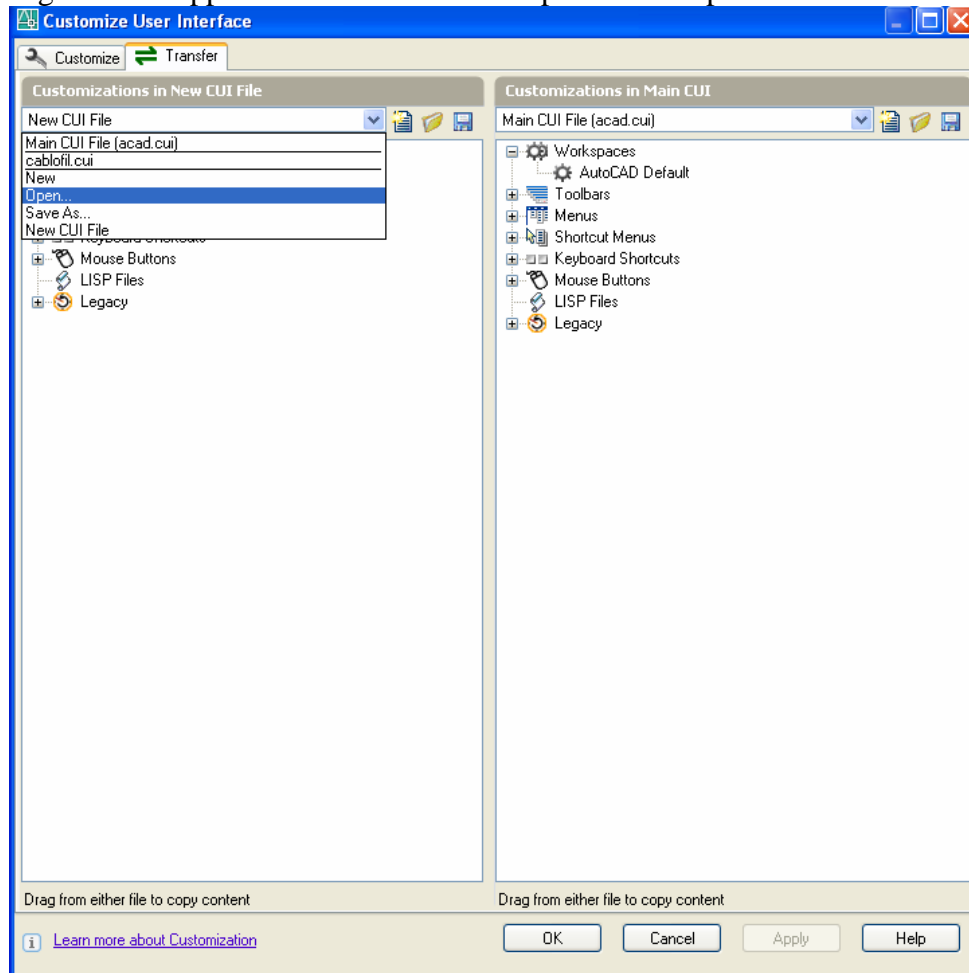
(If you know how to add folders to the *AutoCAD Support File Search Path* you can leave the files in the *C:\Cablofil* folder and add the *C:\Cablofil* folder to your *AutoCAD Support File Search Path*.)

Step 3

Start up AutoCAD and select 'Tools → Customize → Import Customizations' from the menu as shown below.

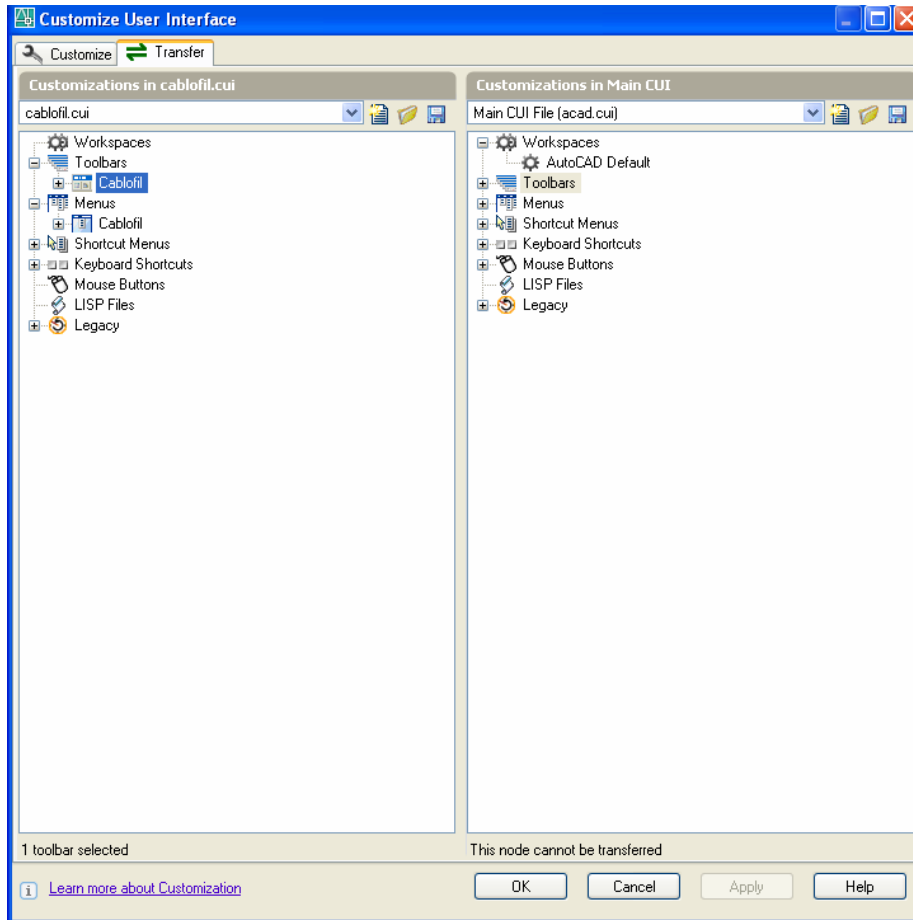


The following box will appear. On the left window pane select open as shown.



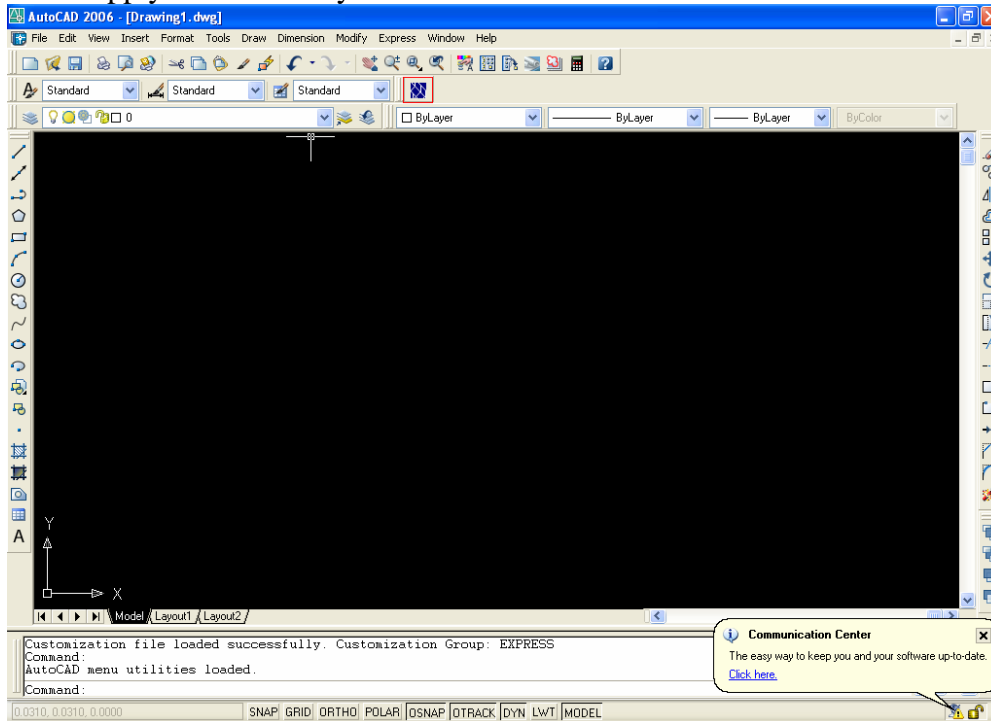
Then browse to where you placed all the Cablofil files (should be *C:\Program Files\AutoCAD 2006\Support*) and select the Cablofil.mns file then click open.

If done correctly you can expand the Menu and Toolbar options and should have something that looks like this:



Now you have to drag the Cablofil objects from the left side to the corresponding position on the right side(i.e. The Cablofil under Toolbars on the left gets dragged to the Toolbars on the right).

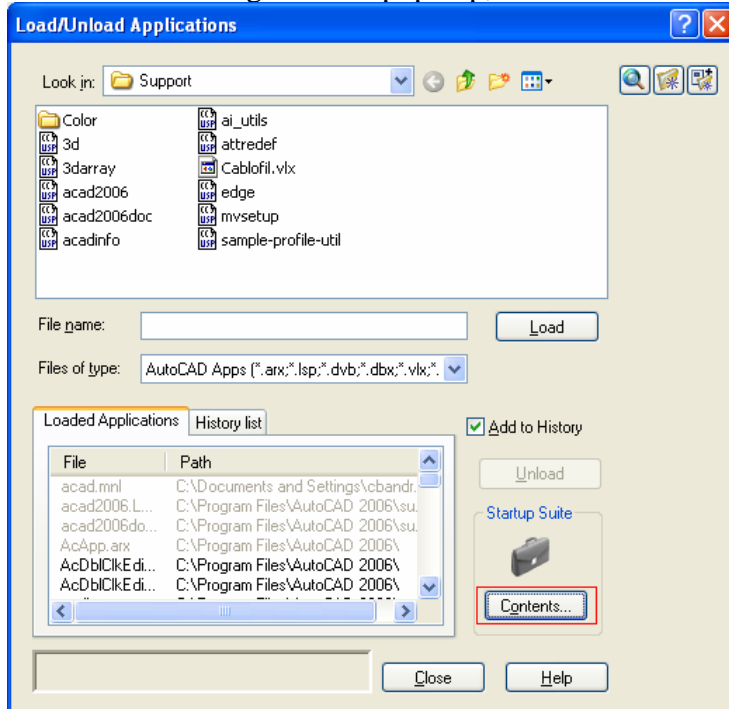
Click Apply then Ok and you should now notice the new Cablofil Toolbar.



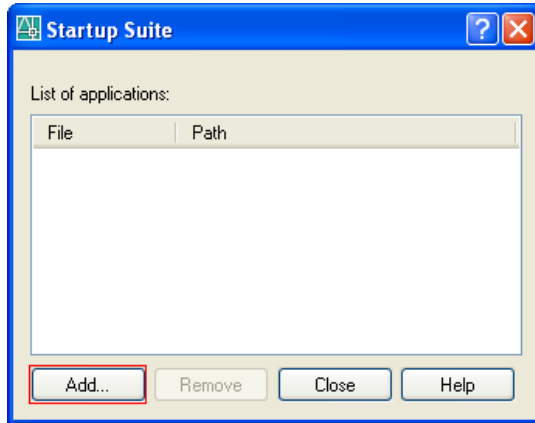
Now type the command “apload”.



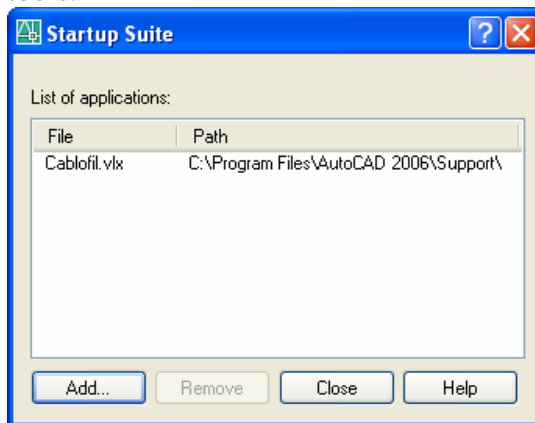
When the following window pops-up, click on the Contents button:



In the window that opens(see below), click on add, select the file Cablofil.vlx(It should be in the *C:\Program Files\AutoCAD 2006\Support* or wherever you extracted the tools to) and click add.




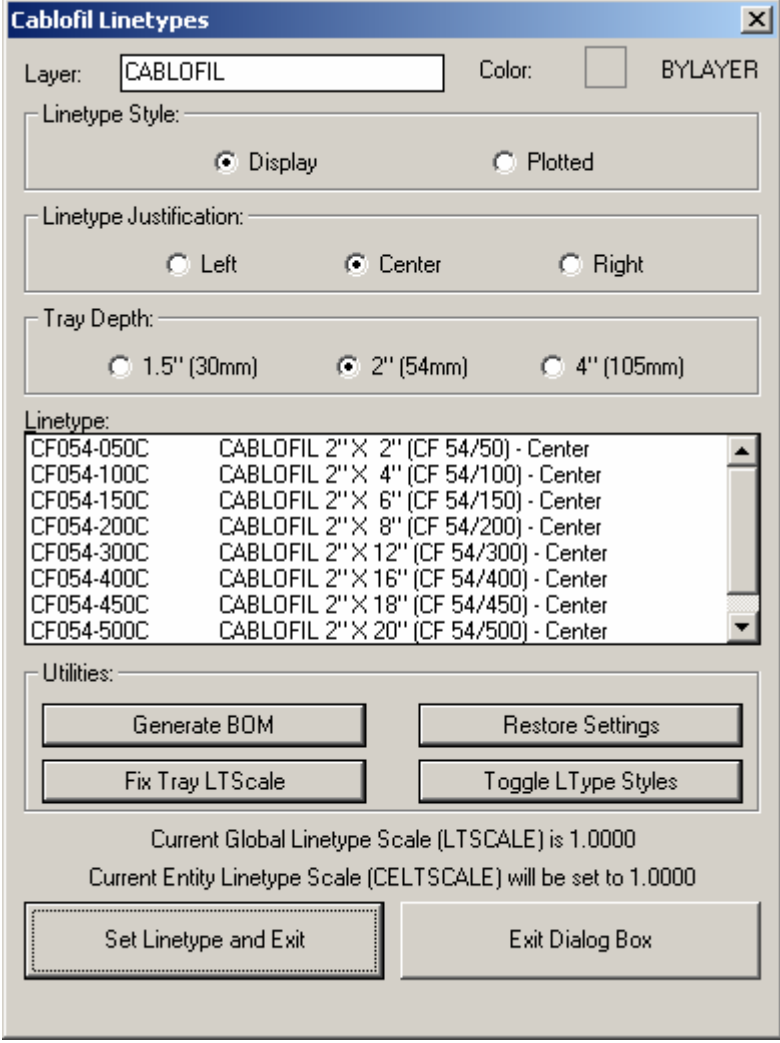
If your screen now looks like this, you are finished and now can use the Cablofil AutoCAD tools.



Please read on for more information about the tool itself.

A Quick Look at Using the Cablofil ACAD Tools

Pick the  button or type CABLOFIL to use the Cablofil ACAD Tools program. The following dialog box will appear.




The dialog box titled "Cablofil Linetypes" contains the following sections:

- Layer:** CABLOFIL
- Color:** BYLAYER
- Linetype Style:** Display, Plotted
- Linetype Justification:** Left, Center, Right
- Tray Depth:** 1.5" (30mm), 2" (54mm), 4" (105mm)
- Linetype:** A list of linetypes with their corresponding tray sizes and justifications:

Linetype	Description
CF054-050C	CABLOFIL 2" X 2" (CF 54/50) - Center
CF054-100C	CABLOFIL 2" X 4" (CF 54/100) - Center
CF054-150C	CABLOFIL 2" X 6" (CF 54/150) - Center
CF054-200C	CABLOFIL 2" X 8" (CF 54/200) - Center
CF054-300C	CABLOFIL 2" X 12" (CF 54/300) - Center
CF054-400C	CABLOFIL 2" X 16" (CF 54/400) - Center
CF054-450C	CABLOFIL 2" X 18" (CF 54/450) - Center
CF054-500C	CABLOFIL 2" X 20" (CF 54/500) - Center
- Utilities:**
- Scale Information:** Current Global Linetype Scale (LTSCALE) is 1.0000
Current Entity Linetype Scale (CELTSCALE) will be set to 1.0000
- Buttons:**

All of the program features appear in this one dialog box. The primary purpose of this program is to load a *Cablofil Custom Linetype* and set it as the current entity linetype. To do this simply select the *Tray Depth*, then the appropriate tray in the *Linetype* list, followed by the *Set Linetype and Exit* button. You may then draw lines using standard AutoCAD commands to represent Cablofil trays.

If you want to draw a different size tray, simply pick the  button, make the appropriate selections, and press the *Set Linetype and Exit* button again. It's that simple.

Advanced Features in the Cablofil ACAD Tools

Layer and Color

The following section of the dialog box allows you to control the Layer and Color for drawing Cablofil trays.



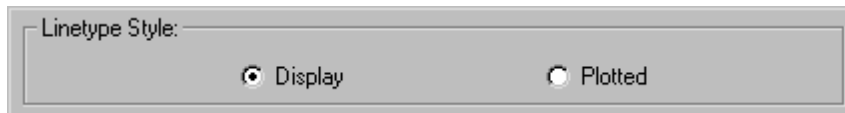
Layer: CABLOFIL Color: BYLAYER

Enter any valid AutoCAD layer name (32 characters max, all letters or numbers, no spaces): if the layer does not already exist, it will be created.

Select the 'square swatch' to change the current entity color.

Linetype Style

The following section of the dialog box allows you to determine which *style* of Cablofil linetypes you prefer.



Linetype Style: Display Plotted

Choose the 'Display' style for the most accurate on screen representation of actual Cablofil trays. The 'Display' style shows all longitudinal and transverse wires that make up the trays. However, some users may find that plotting these linetypes at typical architectural scales produces poor quality results. If this is true, choose the 'Plotted' linetype style. They contain fewer longitudinal wires than actually exist in the trays.

Linetype Justification


The following section of the dialog box allows you to determine which *justification* of Cablofil linetypes you prefer.



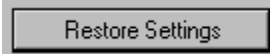
Linetype Justification: Left Center Right

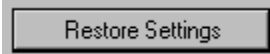
This option determines whether the line you draw will be on the left side, center, or right side of the complex linetype. All three justifications work fine for straight lines. However, using left or right side justification with arcs or curved polylines produces unexpected results. The problem is that AutoCAD generates all arcs in a counter clockwise direction regardless of the order in which you pick the start and end points. Use center justification for the best results when drawing arcs.

Fix Tray LTScale

The  button is used after the AutoCAD global LTSCALE is changed on a drawing that already has Cablofil linetypes drawn in it. You will notice that all entities drawn with Cablofil linetypes will change when the LTSCALE is changed. This button will correct all of the Cablofil linetypes so they are the actual tray widths again.


Restore Settings



The  button can be used to restore the current layer, linetype, color, and current entity linetype scale settings to the way they were when the first CABLOFIL command was executed in the drawing session. Use this button before drawing non-Cablofil entities to prevent the Cablofil settings from affecting the rest of your drawing.


Toggle Ltype Styles

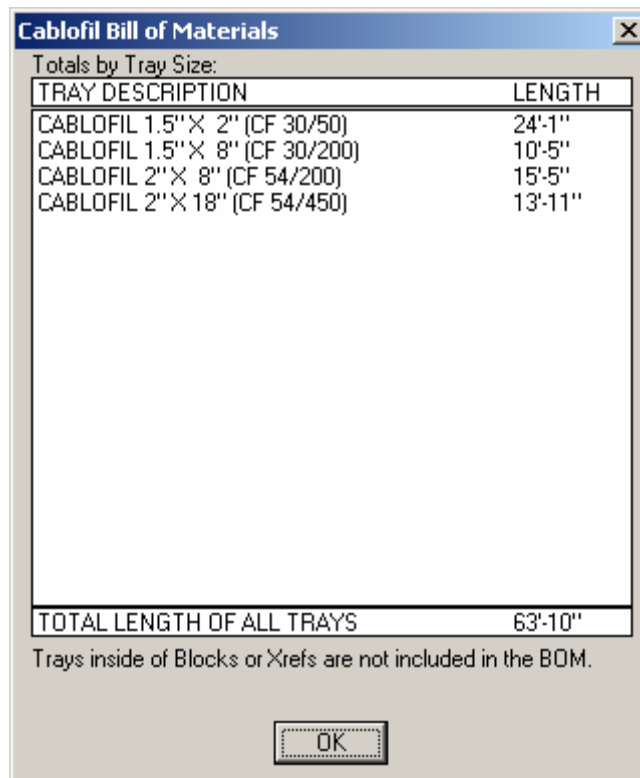


The  button changes all existing Cablofil linetypes on the drawing to either 'Display Style' or 'Plotted Style' (see [Linetype Styles](#) on *Page 4* for explanation of these styles). For example, after drawing all Cablofil trays using 'Display' linetypes, this button might be used to change all linetypes to 'Plotted' style prior to plotting the drawing.

Generate BOM



The  button will calculate all Cablofil tray lengths and display the totals in a dialog box like the one shown below.



The dialog box titled "Cablofil Bill of Materials" displays a table of tray sizes and their lengths. The table has two columns: "TRAY DESCRIPTION" and "LENGTH". The data rows are:

TRAY DESCRIPTION	LENGTH
CABLOFIL 1.5" X 2" (CF 30/50)	24'-1"
CABLOFIL 1.5" X 8" (CF 30/200)	10'-5"
CABLOFIL 2" X 8" (CF 54/200)	15'-5"
CABLOFIL 2" X 18" (CF 54/450)	13'-11"

At the bottom of the table, a summary row shows: "TOTAL LENGTH OF ALL TRAYS" with a value of "63'-10\"". Below the table, a note states: "Trays inside of Blocks or Xrefs are not included in the BOM." An "OK" button is located at the bottom of the dialog box.

The length will be shown in the same units as the current drawing units. Entities drawn with Cablofil linetypes will be included in the total as long as they are not 'blocked' or 'xrefed' in the drawing.

--- end of manual ---