

Solutions

CABLOFIL®



Cablofil And Mega Watt Provide Innovative Solution For Anchorage Convention Center

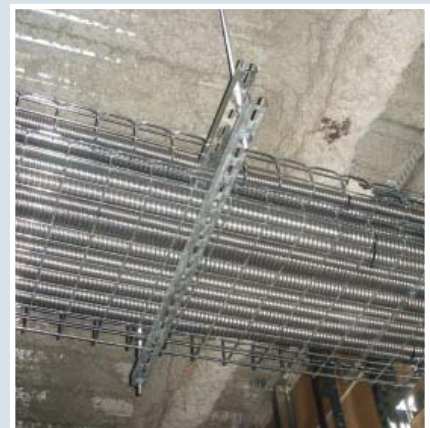


Electrical contractor Mega Watt selected MC cable supported by Cablofil/Legrand tray for the new 45,000 sq. ft. Anchorage Civic and Convention Center because the system is easy to install and provides a clean, neat appearance.

When completed in 2008, the Anchorage Center will offer a world-class convention facility featuring a 25,332 sq. ft. ballroom with capacity for 140 booths, 1,800 banquet seats or 2,867 theatre-style seating. In addition, an exhibit hall will accommodate 274 trade show booths, 3,408 banquet

seats or 5,000 as a theatre space. The flexibility of this open style will provide room for expansion as needed, with 10,372 sq. ft. of space for meeting rooms.

One of the major challenges for Mega Watt was the Center's design for an open ceiling throughout the exhibit halls and all interior office spaces. All plumbing, HVAC and cabling would be exposed and were required to be installed in a neat and orderly manner. The design called for the ceilings and ceiling installations to be painted black after completion, to



One of the major challenges was the Center's design for an open ceiling throughout the exhibit halls and in all interior office spaces.

help reduce the visual clutter.

Mike Kennedy, from Alaska Electrical Reps, and Cablofil/Legrand Area Manager Pat Kirby had been discussing a new VE Plus program designed to promote the use of MC cable supported ▶

Solutions

CONTINUED

by Cablofil tray as a labor-saving alternative to traditional pipe and wire. Since this cable and tray system also provides a cleaner, more orderly appearance than MC cable alone, Kennedy and Kirby decided to present the idea to Mega Watt Electric.

re-engineer the drawings immediately and within several weeks, Kirby presented them to Mega Watt. "We were considering using aluminum feeder MC from the beginning," says Ed Harris, Project Manager for Mega Watt. "What convinced us to use wire cable tray were the clean lines the installation created."



Because Mega Watt was not used to installing basket tray, Kennedy arranged for a simple training session that included techniques for cutting the tray and making splices. "The Mega Watt installers picked it up very quickly," says Kennedy, "and pretty soon they were using tray in ways we'd never thought of. They were great to work with."

VE Plus is an innovative program that helps contractors reduce installation time for projects that would normally use traditional conduit and wire. By using MC cable supported by wire mesh tray and utilizing timesaving techniques, contractors can reduce labor substantially. "With the VE Plus program," Kirby says, "we value engineer the project for our customers and show them how to lower their total costs."

For the Anchorage project, a set of plans was sent overnight to Bob Crain, Technical Sales Manager at Cablofil. He and his engineering staff started to

The convention center's power requirements dictated service panels totally 6,000 amps at 480 volts. In this case, Mega Watt decided to use MC cable supported by Cablofil tray primarily for the feeder lines. Branch cabling was then installed in conduit buried in concrete.

In addition to power, the convention center also required an extensive amount of wiring for environmental, data, telephone and security. The final installation design included double tiers of Cablofil 24" tray to handle the large number of cable bundles. In all, more than 4,200 feet of tray was used.

"This system eliminated pull boxes and simplified the whole process," says Job Supervisor Mike Plaster. "In all, it reduced the install time by a third."

The Anchorage Convention project proved to Mega Watt that they could reduce their installation costs considerably. A crew of electricians constructed supports of strut hung from 1/2" threaded rod anchored to the ceiling deck every five feet. Immediately behind them, a single worker was able to install tray by splicing and securing the tray to the strut. In this application, tray sizes ranged from 6" deep by 18" wide to 4" deep by 6" wide.

Additional time savings were realized when the cable was pulled into the tray. "This system eliminated pull boxes and simplified the whole process," says Job Supervisor, Mike Plaster. "In all, it reduced the install time by a third."

The Anchorage Civic and Convention Center is an excellent example of the growing use of MC cable supported by Cablofil tray. During the course of this innovative project, some 85 feeder lines were installed, including 600 MCM cables with vertical transitions up to ceilings 50 feet high and cable pulls up to 495 feet in length. ■

www.cablofil.com
Phone 800-658-4641
618-566-3230
Fax 618-566-3250
8319 State Route 4
Mascoutah, IL 62258 USA

CABLOFIL®

 **legrand®**